

# READY MADE TOUR PACKAGE

EXPLORE

# MEGHALAYA

*Itinerary*  
YOU'LL LOVE  
6N 7D

1N Kaziranga + 2N Shillong + 2N Cherrapunjee + 1N Dawki



## FIXED DEPARTURE EVERY SATURDAY

### INCLUSION



DATES

**JANUARY**  
2026

10 17  
24 31

**FEBRUARY**  
2026

07 14  
21 28

**MARCH**  
2026

07 14  
21 28

**APRIL**  
2026

04 11  
18 25

**MAY**  
2026

02 09  
16 23

**JUNE**  
2026

06 13  
20



<https://gogoldentrips.com>



[sales@gogoldentrips.com](mailto:sales@gogoldentrips.com)



+91 80012 52000 | +91 73630 02423

1 DAY

**Kaziranga**



2 DAY

**Shillong**



3 4 DAY

**Cherrapunjee**



5 DAY

**Dawki**



6 DAY

**Shillong**



Authorised  
Member





# Tour Itinerary

6N 7D

- ▼ Day 1: Guwahati Airport / Rly Stn to Kaziranga - Pickup
- ▼ Day 2: Kaziranga to Shillong - JUNGLE ACTIVITIES AT KAZIRANGA NATIONAL PARK & TRANSFER
- ▼ Day 3: Shillong to Cherrapunjee - Transfer and Sightseeing
- ▼ Day 4: Cherrapunjee - Double Decker Root Bridge Sightseeing
- ▼ Day 5: Cherrapunjee to Dawki - Mawlynnong - Dawki sightseeing and Transfer
- ▼ Day 6: Dawki to Shillong - Krang Suri and Phe Phe Waterfalls Sightseeing and Transfer
- ▼ Day 7: Shillong to Guwahati Airport / Rly Stn - DROP

## Vehicles



**TEMPO TRAVELLER**



**SEDAN**

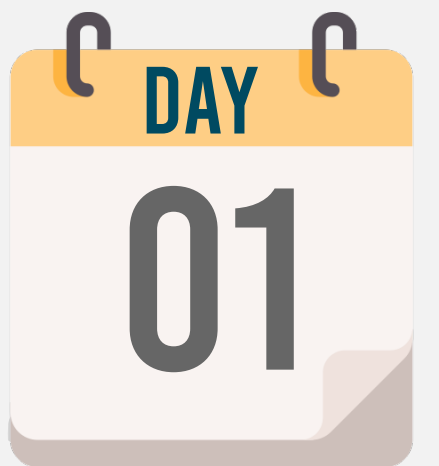


**INNOVA/CRYSTA**



## Destination 01

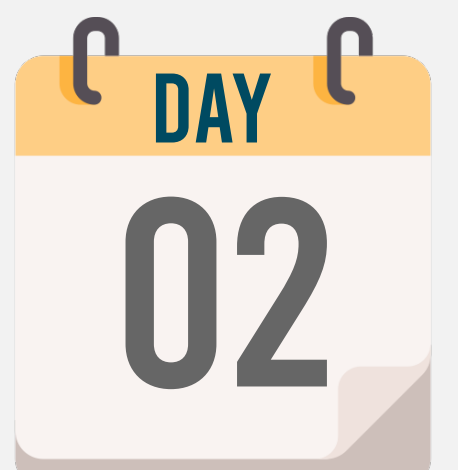
Guwahati TO Kaziranga



After receive from Guwahati airport / Railway Station assistance and warm traditional welcome by our representative. Later transfer to Hotel. Overnight stay in Kaziranga .

## Destination 02

Kaziranga TO Shillong



After An Early Wake Up, You Will Be Taken To The Riding Point In The Central Range (Kohora) For An Elephant Ride (Direct Payment). After The Ride Return Back To The Hotel. After Breakfast Drive To The Central Range (Kohora) Of The Park For A Jeep Safari (Direct Payment) And Drive Towards Shillong, Also Known As 'The Scotland Of The East' Is The Capital City Of Meghalaya. En Route You Will Visit The Largest Manmade Lake Of Northeast India – Umiam Lake .Overnight In Shillong.



## Destination 03

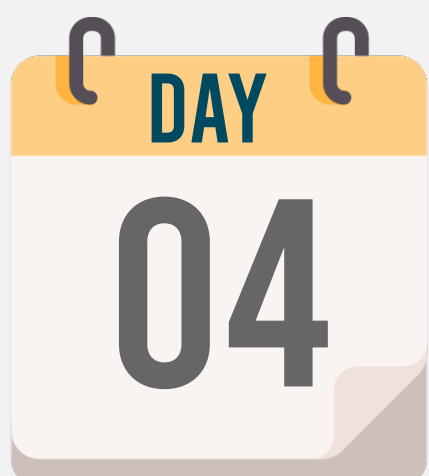


### Shillong TO Cherrapunjee

After a delightful breakfast, depart from Shillong and head to Cherrapunjee, where you'll check into your hotel or resort. Begin by visiting the awe-inspiring Nohkalikai Falls, followed by an adventure through the mystical Mawsmai Caves. Experience the beauty of the magnificent Seven Sisters Falls. Complete your day with stunning panoramic views from Shillong Peak. Enjoy a restful overnight stay in the serene surroundings of Cherrapunjee.



## Destination 04



### Cherrapunjee - Double Decker Root Bridge Sightseeing

We will hike to the Double Decker Bridge today after breakfast. It's a strenuous 3-hour one-way hike with 2,500 steps. A guide is necessary to be taken for this journey. Visit the Cherapunjee market and local churches thereafter. Spend the night in Cherapunjee.





## Destination 05

### Cherrapunjee TO Dawki



After breakfast check out hotel and drive to Mawlynnong (90 km/3 hrs). Reach Mawlynnong and visit Mawlynnong village (The cleanest village in Asia, Mawlynnong, is a pleasant place where you can visit and unwind. The rains bring out the luscious greens of the trees and forests. The gorgeous green grasses do bring out the beauty of the village.), living root bridge. Note: It is advisable to carry packed lunch to Mawlynnong. After lunch drive to Dawki (35 km/1 ½ hrs) and boating at Umngot river – the crystal clear water river. Later drive back to Shillong (90 km/3 hrs). Check in hotel at Dawki. Overnight at Dawki.

## Destination 06

### Dawki to Shillong



Begin your day early with a hearty breakfast and set off towards Krang Suri Falls. Renowned for its stunning beauty, this waterfall is easier to access than many others in Meghalaya. A brief 15-minute walk offers a spectacular view of the falls, perfect for photos. After savoring this natural wonder, continue to Phe Phe Falls, a breathtaking two-tiered cascade. Named after the Jaintia word for "Paradise," Phe Phe Falls requires a short trek to reach its base, where you'll be rewarded with magnificent views. Spend time marveling at the falls before making your way back up and resuming your drive to Shillong for an overnight stay.



## Destination 07



### Shillong to Guwahati Airport

After breakfast Check out from the hotel and transfer to Guwahati airport / Railway Station for the onward journey.



## Tour Packages

**ORIGINAL  
PRICE**

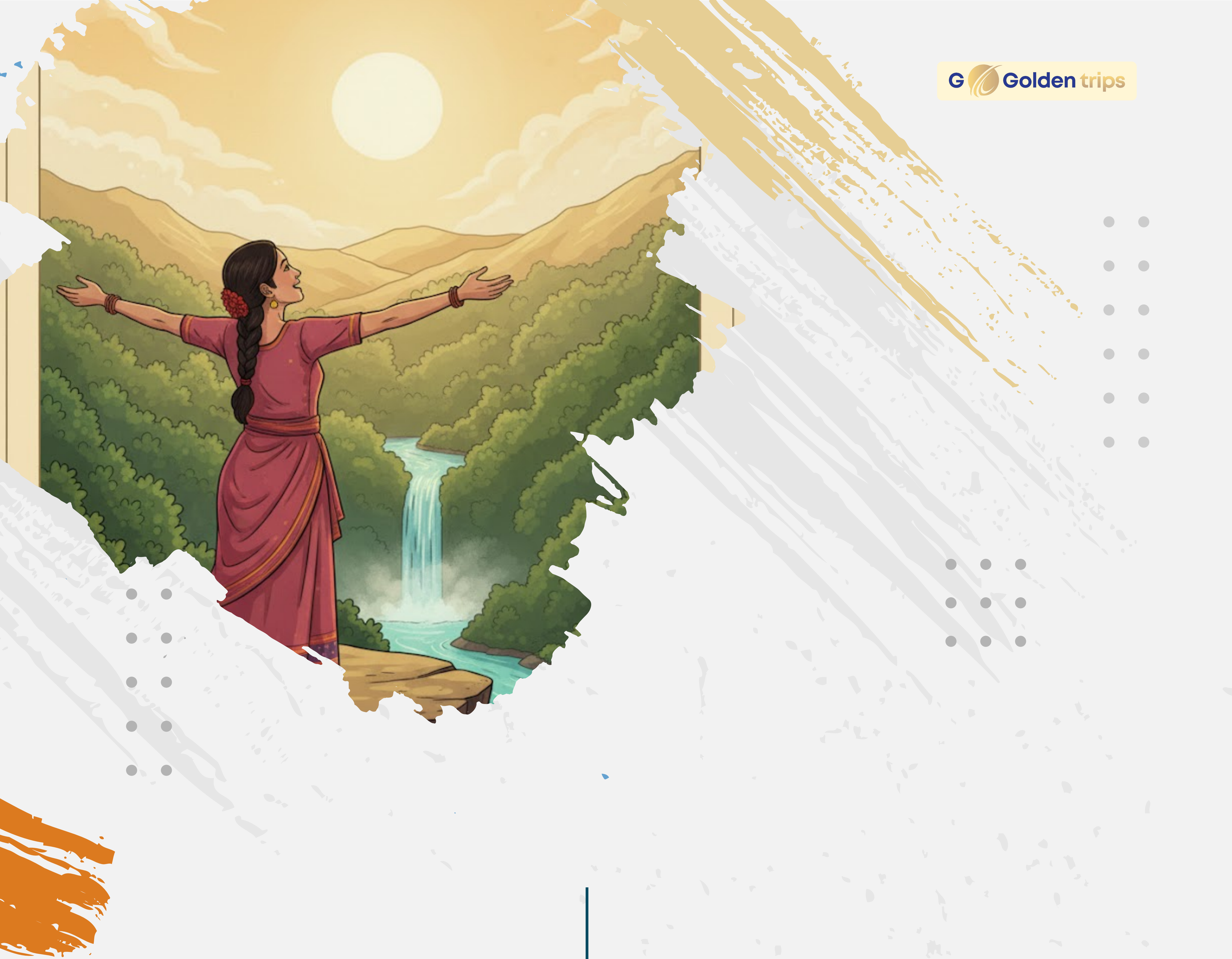
**23,999 INR**  
PER PAX

**DISCOUNTED  
PRICE**

**18,999 INR**  
PER PAX

**Grab the first 6 slots at an  
exclusive rate of ₹ 18,999/-**





## CANCELLATION POLICY

- Cancellation has to be sent to us by Mail/Fax.
- 30 Days from The Date of Booking: No Cancellation Charges before 30 Days
- 21-30 Days Prior To Departure : 25% Of Tour Cost. 11-20 Days Prior To Departure: 50% Of Tour Cost.
- 10 Days Prior To Departure : Full Cancellation.
- Above are the cancellation rules but we will put our best possible effort to minimise the cancellation charges.

## ARRIVING & DEPARTING

- The vehicle will depart from the airport only after picking up the last arriving guest from the batch. Guests arriving earlier are requested to wait until the final pickup is completed.
- On the day of departure, the vehicle will leave the hotel after breakfast, as per the timing of the first departing guest's flight

## INCLUSIONS

- Accommodation as per the itinerary
- Meal Plan Mention In the hotel Section in Itinerary
- Pick up and drop from Airport by a private Car
- All sightseeing by private cars as per itinerary
- State tax, hotel tax, and driver charge.
- All toll taxes, driver's allowance, parking charges.
- Jungle Safari at Kaziranga national park.

## EXCLUSIONS

- item of personal nature- tips, laundry, room service, telephone, alcoholic or non alcoholic beverages, boat rides, safaris, additional sightseeing tour.
- Any kind of insurance, Air, Train or Bus fare from / to your originating city of stay, unless specified
- Entrance fee and guide charges, wherever applicable.
- Personal meals and personal expenses like entry tickets, telephone, laundry or anything which is not mentioned in the inclusions.
- NOTE: Anything not mentioned in the inclusions is excluded.





## About us

Go Golden Trips — every journey you take becomes a golden chapter in your life, and we're here to make it shine. From wandering through misty mountains to connecting with incredible local stories, we create experiences that stay with you long after the trip ends.

You're not just a traveler with us — you're part of our Golden circle. With years of expertise and a passion for meaningful travel, we make every trip smooth, memorable, and wonderfully magical.



### MORE INFO

**+91 80012-52000**

**+91 73630-02423**



[sales@gogoldentrips.com](mailto:sales@gogoldentrips.com)



<https://gogoldentrips.com>



<https://www.instagram.com/gogoldentrips?Tigsh=dDlidzNpc3JuZHV4>

